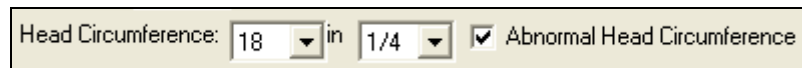


HealthOffice 5.7 Release Notes

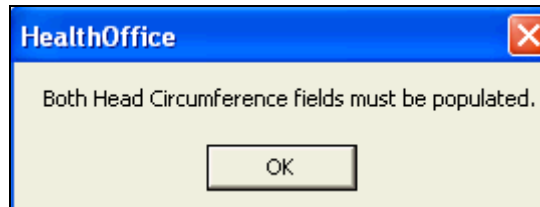
Main Program

Growth Exam

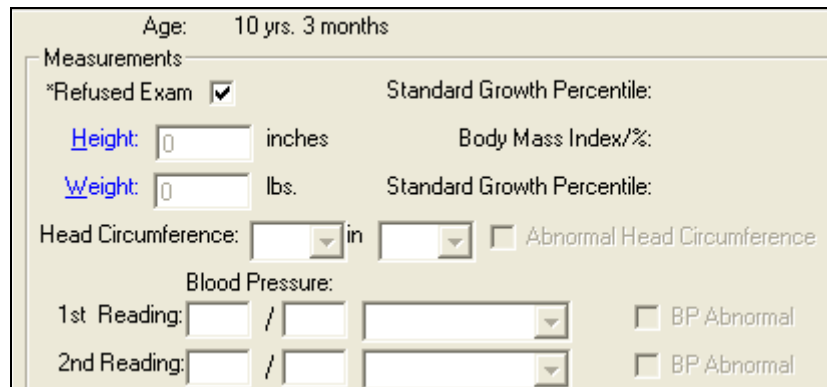
- A second blood pressure field has been added to the Growth Exam.
- An additional field for which arm is used to check the blood pressure has been added for both blood pressure checks.
- The following reports have been updated to reflect the new fields:
 - 201-Events Detail
 - 207-Growth Exams Detail
 - 221-Growth Exams Summary
 - 400-Items Logged Detail
- Three new Head Circumference fields have been added to the Growth Exam. The measurement fields of 1-24 and 0 – 7/8 along with a check box for Abnormal Head Circumference:



Please Note: If only one of the Head Circumference fields is populated, the following error message will appear:



- The following reports have been updated to reflect the new fields:
 - 201-Events Detail
 - 207-Growth Exams Detail
 - 221-Growth Exams Summary
 - 400-Items Logged Detail
- A **Refused Exam** check box has been added to the Growth Exam. Once this box is checked, all fields are grayed-out.



- The Refused Exam information has also been added to same reports as above.

Continued on next page

HealthOffice 5.7 Release Notes

Main Program, Cont.

Group Growth Exam

A new feature has been added to allow the ability to open a student's Growth Exam by double-clicking on the Student name in the Grid.

Group Growth Exams -							
Name	Grade	Room	Age	Gender	Position	Time In	Time Out
Beaufort, Patricia E	1	101	6 yrs. 7 months	F	Student	06:15 AM	06:15 AM
Cameron, Ian	1	205	6 yrs. 10 months	M	Student	06:15 AM	06:15 AM
Patrick, John	2		7 yrs. 4 months	M	Student	06:15 AM	06:15 AM
Perkins, Terry	2		7 yrs. 4 months	F	Student	06:15 AM	06:15 AM
▶ Stewart, Bryan	2		7 yrs. 4 months	M	Student	06:15 AM	06:15 AM
Zinger, Franics	1		4 yrs. 2 months	F	Student	06:15 AM	06:15 AM

Tuberculosis Results Exam

- The **Reading** field under the Test Results section has been changed to allow a selection from **0mm** to **15mm**.

The screenshot shows a 'Test Results' dialog box with the following fields and options:

- Read Date: 01/31/11 (dropdown)
- Radio buttons for: None, Positive, Negative
- Reading: 4mm (dropdown)
- Old Reading: 5mm (text input)

- There is a new field below the Reading field labeled **Old Reading**. If a past Tuberculosis Results Exam is displayed that was saved prior to Release 5.7, the Reading will display in the Old Reading field.
- The following reports have been updated to reflect the new fields:
 - 201-Events Detail
 - 229-Tuberculosis Result Exam Summary
 - 231-Tuberculosis Result Exam Detail
 - 400-Items Logged Detail

HealthOffice 5.7 Release Notes

Main Program, Cont.

Static Drop-down Lists

The following items have been added to the different Static Drop-down Lists:

All RAD screens

Dispositions

- Returned to Lunch
- Returned to PE

Office Visits

Treatments Tab

Treatments/Interventions

- Deodorant
- Ice Chips
- Pressure, Self-Applied

Incident Tab/Details/Contributing Factors

- Medication Error

Office Visits & Special Problems

Symptoms Tab/System Group drop-down

System Group-Other Miscellaneous

Other/Miscellaneous Symptom/Condition List

- No Breakfast
- No Lunch

Prenatal Visit

- A new field labeled “**Due Date**” has been added to the Prenatal Visit screen.
- The following reports have been updated to reflect the new field:
 - 238-Prenatal Visits Detail
 - 239-Prenatal Visits Summary

Postpartum Visit

- A new field labeled “**Delivery Date**” has been added to the Postpartum Visit screen.
- The following reports have been updated to reflect the new field:
 - 240-Postpartum Visits Detail
 - 241-Postpartum Visits Summary

Special Needs Administration

- The **Needed Units** field within the Diabetes tab has been increased to a 2 digit decimal. For example, a unit of 13.25 can now be entered in this field.

HealthOffice 5.7 Release Notes

Main Program, Cont.

Student Record

- The “**View Care Plan**” Blue Cross that is displayed on every Event screen at the top of the screen, no longer flashes if all of the students’ Care Plans have been deleted.
- All “**Medical Comments**” that have been entered on the Medical tab in the Student record now display at the bottom of the Emergency Information screen. Remember, this is accessed from the flashing Red Cross icon at the top of any screen.
- “**Medical Alerts**” are now displayed in the **Audit Log** on the Student Record when a change is made. The Audit Log will show the medical alert that was changed, along with date, time and who it was changed by.
- The following reports have been updated to include the **Medical Alert Audit Log**:
 - 102-Complete Student Record
 - 108-Alerts
 - 110-Demographic Report w/ Health Summary
 - 111-Emergency Cards

Letter Maintenance

- Two new Insert Fields have been added for Office Visits:
 - Office Visit Comment
 - Incident Comment

Prescriptions & Standing Order Medications

- The number of allowable characters for Prescriptions and Standing Order Medications has been increased to:
 - 50 characters for Medication Name
 - 35 characters for Medication Unit.

The following reports have been updated to reflect the increase in number of allowable characters:

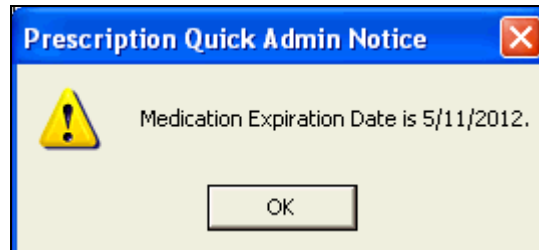
- 201-Events Detail
- 202-Events Summary
- 400-Items Logged Detail
- 401-Items Logged Summary
- 402-Scheduled Events
- 405-Scheduled Medications
- 406-Scheduled Medication Summary
- 500-Administered Medication Summary
- 501-Prescription Records Summary
- 502-Prescription Records Detail
- 504-Standing Order Detail
- 505-Controlled Substances
- 507-Administered Medications Detail
- 511-Administered Standing Orders Detail
- 512-Administered Standing Orders Summary
- 513-Administered Prescriptions Detail
- 514-Administered Prescriptions Summary

Continued on next page

Main Program, Cont.

Prescriptions & Standing Order Medications, Cont.

- A new Medication Classification of **Immunosuppressant** has been added to the drop-down list in the Prescription screen and the Standing Order screen.
- A new field called "**Medication Expiration Date is:**" has been added to the Maintenance\Prescription screen on the information tab. Once a medication expiration date has been added and it is 15 days or less from expiring, a warning message is displayed when the prescription is scheduled and administered by Quick Admin.



This warning message is displayed each time the medication is administered in Quick Admin **only**. The expiration of the medication is displayed in the Administration event if not done by Quick Admin. The medication expiration is displayed on the following reports:

- 201-Events Detail
- 502-Prescription Records Detail
- 507-Administered Medications Detail

Reports Program

200 Reports

A new selection criterion of **Refused Exam** with choices of Exclude Refused, Include Refused, Refused Only has been added to Report 207-Growth Exams Detail and Report 221-Growth Exams Summary.

500 Reports

A new selection criterion of **PRN /As Needed** with choices of Exclude PRN, Include PRN, PRN Only has been added to Report 513-Administered Prescription Detail and 514-Administered Prescription Summary.

A Legend has been added to Report 514-Administered Prescription Summary. The last column showing **Type*** will populate M for Missed, P for PRN/As Needed, and S for Scheduled.

<small>*Legend: M = Missed Admin P = PRN/As Needed S = Scheduled</small>	<small>514- Administered Prescriptions Summary</small>	<small>Page 1 of 1</small>
<small>08/03/12 08:12AM</small>	<small>HealthOffice</small>	

A **NEW** report entitled **520-Glucose Charting** has been added. Populating this report requires the completion of a Special Needs Administration. The Diabetes tab must have the **Blood Glucose** reading(s) entered (This field accepts up to four characters (letters or numbers)). The report also reflects the **CHO** (Carbs), the **Needed Units** and the type of **Insulin** being used as well as the **Ketone Check** and **Time**. It also includes the **Carb. Intake Notes** that have been documented in the Diabetes Continued tab.

Reports Program, Cont

900 Reports

The 903-Texas Immunization Compliance Report has the following changes:

- Section 2, Table 1: Item (K) was reporting incorrect conscientious exemptions. It was verified with the Texas Immunization Dept. that the number of students with ANY exemptions in PreK should be counted in (K) on the report.
- It was also verified with the State that PreK means all children in any class prior to Kindergarten. In Table 2, the working for (N) Total Enrollment for grade Kg has been corrected.

The 904-Massachusetts Monthly Activities Report has the following change:

- The RAD Disposition of **Not Applicable** has been mapped and will populate 4B on page 1 of the report.

The State of New Jersey has updated the 906-New Jersey Health History and Appraisal Report (A-45NJ) and the following changes have been made to the report.

- In the **History** section, the following fields have been updated or added:
 - Allergies have been divided into 2 sections for the System Group: Food Allergies, Non-Food/Non-Drug Allergies.
 - Sections added: Influenza (Flu), Other and ADD/ADHD.
- The following Symptom/Conditions have been added as a selection so the noted History section will populate in the report:

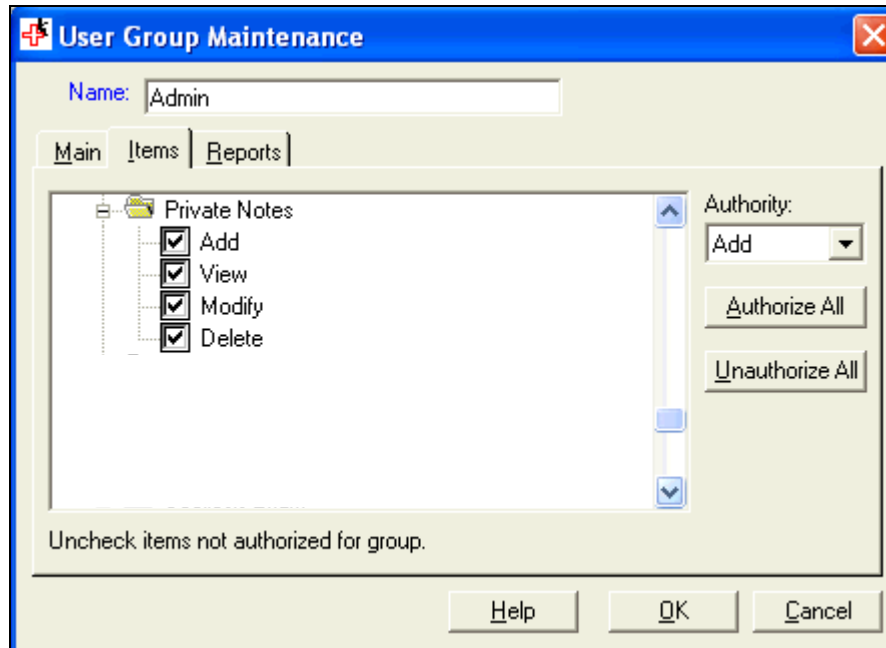
• Allergic Reaction-Latex (Non-Food/Non Drug Allergies)	• Down Syndrome (Congenital)
• Asperger Syndrome (AS) (Autism Spectrum Disorders)	• Gynecological (Other)
• Asthmatic Reaction (Asthma)	• Hemoglobinopathies (Hematological)
• Attention Deficit Disorder ADD (ADD)	• Influenza-Confirmed (Influenza)
• Attention Deficit Hyperactivity ADHD (ADHD)	• Influenza –Like Illness (Influenza)
• Autism Spectrum Disorder (ASD) (Autism Spectrum Disorders)	• Influenza-Suspected (Influenza)
• Cri du chat Syndrome (Congenital)	• Lymphoma (Hematological)
• Dental (Other)	• Nutrition/Metabolic (Other)
• Genitourinary (Other)	• Other/Misc (Other)
• Dermatological (Other)	• Parasites (Other)
• Disorders from Physical Agents (Other)	• Von Willebrand Disease (Hematological)

- The *Requires Medical Exemption footnote on page 1 has been removed.

Admin Program

Security

Private Notes can be controlled within the Admin Program under Security/Manage User Groups/Items/Private Notes. There are the four options to authorize:



This now provides the access of the note with the use of a user password. The Private Notes are a cumulative list of all student Private Notes in one area and not divided per student.

In the **Manage Users** screen, two new text fields have been added at the bottom of the User Information tab. They are **Category** and **Sub Category**. These fields are used for logistical management purposes.

Manage Users\Schools

The User Maintenance screen now offers the ability to control schools by **District\Region\School**.

Once the User Maintenance screen is displayed for the desired User, select the **Schools** tab. All Schools within the Districts and Regions are displayed in the "**Available Districts/Regions/Schools**" field on the left side of the screen.

The different buttons can be used to bring over the highlighted schools as well as the "Shift" and "Ctrl" buttons on the keyboard.